



Data-sheet

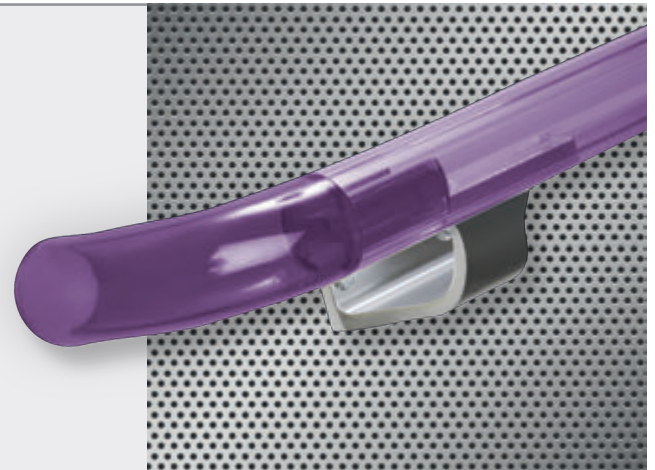
Handrails

VISION | Transparent polycarbonate

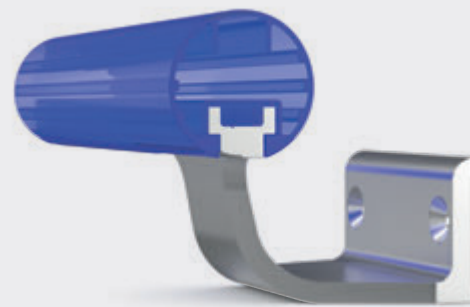
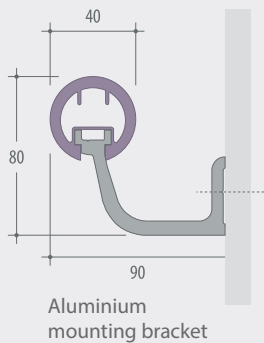
version 4 | 2017

Futuristic transparent looks with all the features of a top grade handrail

- Extruded, extra resistant polycarbonate offering a warm and pleasant touch with an excellent grip
- Available in five transparent colours
- Allows for eye-catching interior LED illumination



DIMENSIONS
4.000x40x40 mm



CHARACTERISTICS



Transparent Colour



M1 Fire rated



Medium Duty

MORE INFORMATION: www.c-sgroup.eu/?p=6859

Product description

Supply and installation of the **VISION handrail** from **CS France**, with 40 mm handrail diameter, a spacial occupation on the wall of 80 x 90 mm and a standard length of 4.000 mm.

The handrail is made of a transparent polycarbonate rail with a retainer groove in which the aluminium wall mounting brackets are inserted and fixed. Transparent infill strips close off the retainer groove providing a continuous, easy clean surface.

The **VISION handrail** possesses **excellent shock absorbency** properties, has a smooth surface, is non-porous, dyed through and M1 fire rated.

The **VISION handrail** is fixed to the wall with **polished aluminium mounting brackets** at 0,80 to 1 m centres.

All materials of the **VISION handrail** are **inert, non contaminant and can be 100% recycled**.

The following accessories can be provided to allow for different configurations: Polished aluminium mounting brackets, standard end caps, external, internal and special corners, universal corner adaptors for stairs, splice plates and removable kits for service ducts.

The manufacturer CS France offers a choice of **5 transparent colours**.



Components and accessories



Standard length 4 m



Aluminium mounting bracket, polished, 80 mm width



Standard end cap



External-internal corner



Universal corner (98° to 165°) to be cut on site



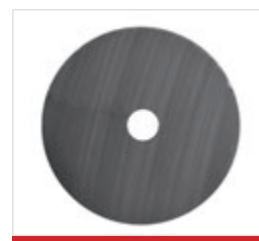
Splice plate



Removable kit for service ducts (2 pieces per kit)



Universal corner adaptor for stairs (available in all 40 Acrovyn® colours)

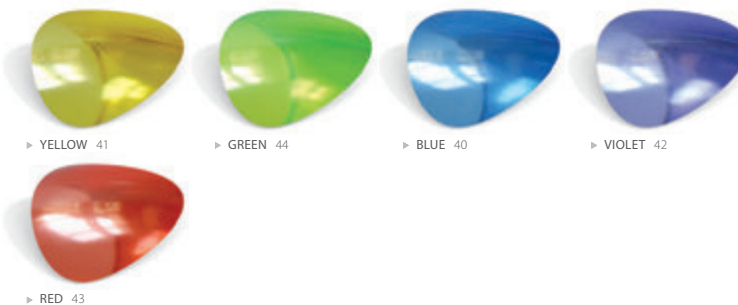


Wall support washer for return-to-wall end caps



Drilling template for wall support washer

Colour range



Colour sample service

The colour representations on this chart might not be exact and can deviate from the real colours.

For best results we recommend to make your colour choice based on real samples.

Please contact our Customer Services Department or local distributor.

