



Data-sheet



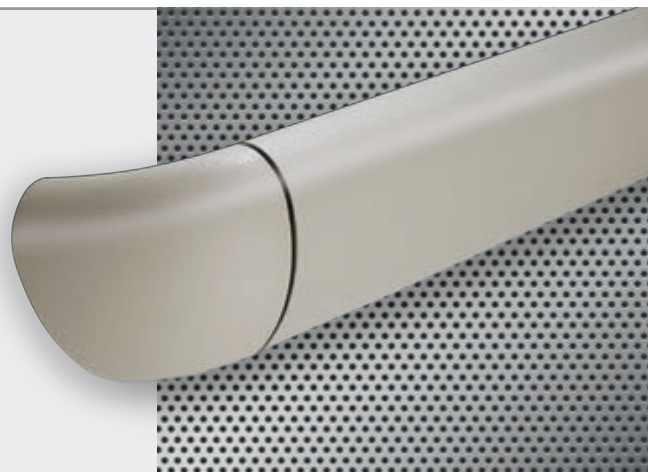
Handrails - Bumper guards

HRB35 | Acrovyn®

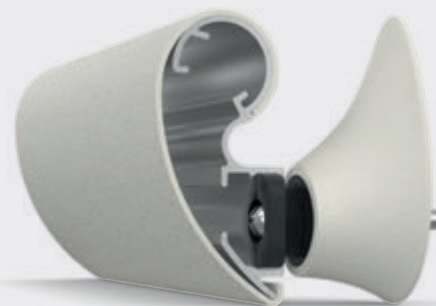
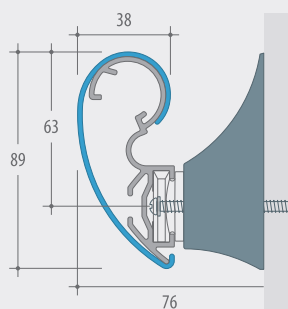
version 4 | 2017

Sleek and stylish handrail - crash rail combo

- Oval Acrovyn® handrail for 335° grip surface
- Acrovyn® crash rail cover over continuous aluminium retainer
- Free-floating design, flexes on impact, neutralising the force
- Easy and fast installation thanks to its Quick Install® fixture system



DIMENSIONS
4.000x89x38 mm



CHARACTERISTICS



40
Acrovyn®
Colours



100%
Bacteriostatic



B-s2,d0
Fire rated



M1
Fire rated



Heavy
Duty



Quick
INSTALL
system

MORE INFORMATION: www.c-sgroup.eu/?p=6865

Product description

Supply and installation of the **HRB35 handrail-crash rail** from **CS France**, with 89 mm height, 38 mm thickness, a spacial occupation on the wall of 89 x 76 mm and a standard length of 4.000 mm.

The **HRB35 handrail-crash rail** is made of an Acrovyn® cover clipped over a continuous aluminium retainer profile.

The handrail-crash rail can be supplied factory pre-assembled with its end caps to save on-site drilling, screw fixing or riveting.

The separate **Quick Install®** brackets will be fixed to the wall every 0,80 to 1 meter approximately. The pre-assembled handrail-crash rail is then placed over the Quick Install® mounting brackets and locked into place with a simple quarter turn of the supplied wrench. Transparent infill strips close off the retainer groove on the rear of the profile.

A decorative insert emphasises the transition between end caps and crash rail.

Acrovyn® possesses **excellent scratch resistance and outstanding shock absorbcency** properties, has a finely grained surface, is non-porous and dyed through.

The **HRB35 handrail-crash rail** has been **fire rated B-s2, d0** in compliance with the European norm NF 13501-1. Test reports can be provided upon request.

Following the European norm NF EN ISO 1716 the **Higher Heating Value (HHV)** was been determined to be **17,828 MJ/kg**. Test reports can be provided upon request.

The **HRB35 handrail-crash rail** was tested on **indoor VOC emissions** (indoor volatile organic compounds emissions) and **certified with A+**. Test reports can be provided upon request.

All materials of the **HRB35 handrail-crash rail** are **inert, non contaminant and can be 100% recycled**.

The **HRB35 handrail-crash rail** has been **manufactured in compliance with the European Directive 2002/95 / EC or RoHS**.

The following accessories can be provided to allow for different configurations: end caps, external and special corners, splice plates and removable kits for service ducts.

The manufacturer CS France offers a choice of **40 standard solid colours**.



Components and accessories



Standard length 4 m



Quick Install® mounting bracket



Standard end cap



External corner



Special external corner
Please consult



Splice plate



Removable kit for service ducts (2 pieces per kit)



Quick Install® tool kit

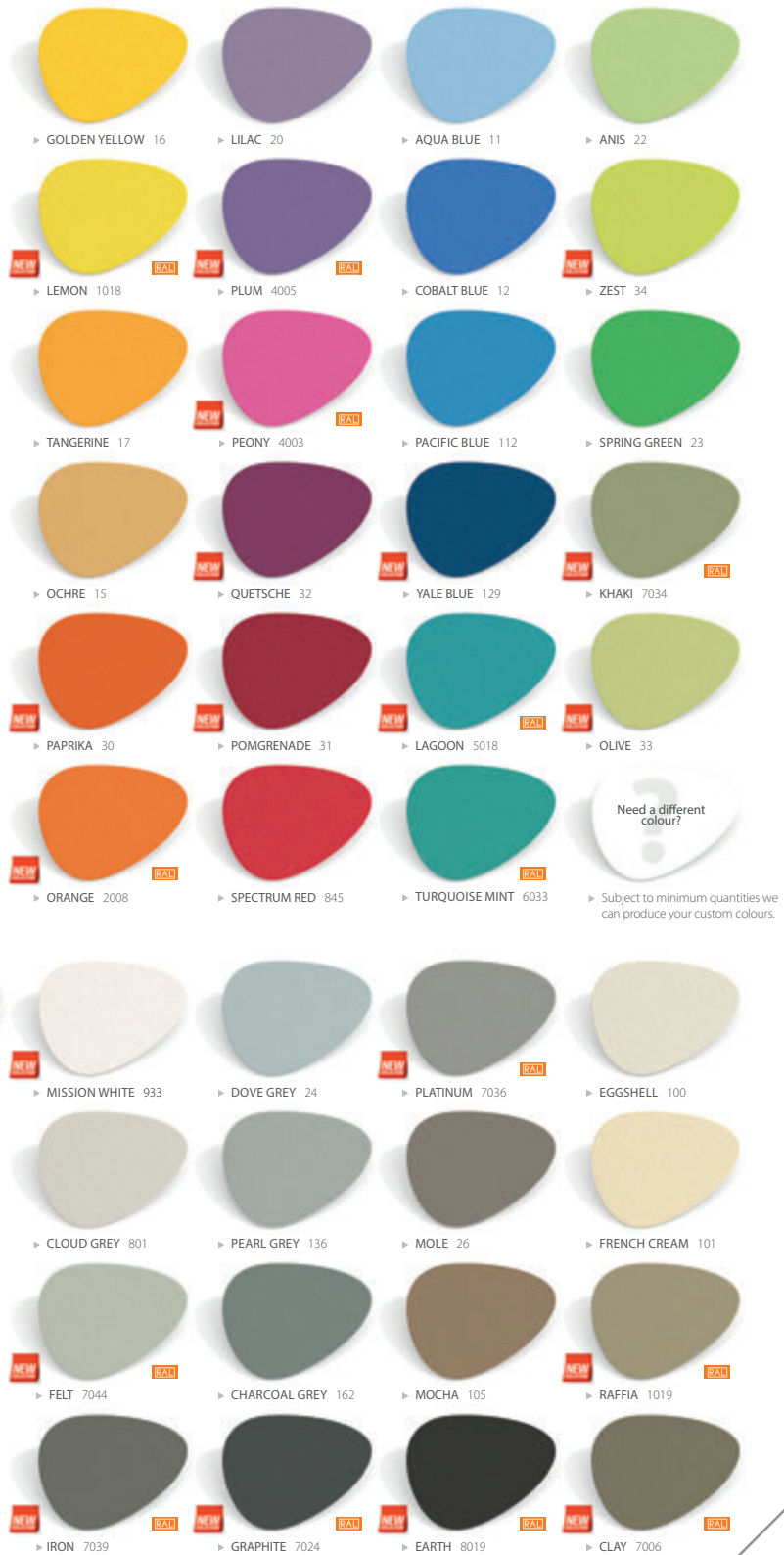
Colour range

Colour sample service

The colour representations on this chart might not be exact and can deviate from the real colours.

For best results we recommend to make your colour choice based on real samples.

Please contact our Customer Services Department or local distributor.



Subject to minimum quantities we can produce your custom colours.